

BYD's Dream All Human Hope

Changing human dependence on non-renewable energy as the starting point, with three green dreams of electric vehicle, energy storage station and solar farm, BYD looks forward to helping more countries and people to get rid of fossil energy over consumption crisis and environmental pollution, and strive to leave offspring a beautiful and clean world to live in.

“

In the daytime, solar panels capture solar energy like plants. At night, energy storage station transports the stored energy, like solar energy, wind energy, tidal energy, to thousands of families smoothly.

The electric vehicle, shuttling on the streets and lanes, is of zero emission, zero pollution.

Is this a dream?

This is the green dream of BYD and even all human beings.

Is this a dream?

No. We are already seeing it approaching us.

”



Average cell efficiency up to 21.8%
Excellent optical performance



Power tolerance 0-5W
Reliability for output performance



10 years for product
25 years linear Warranty



Residential roof top systems
On/Off-grid commercial systems
On/Off-grid utility systems



Design loads: 3600 Pa for positive
(downward) and 1600 Pa for
negative (upward)

Safety factors γ_m : 1.5

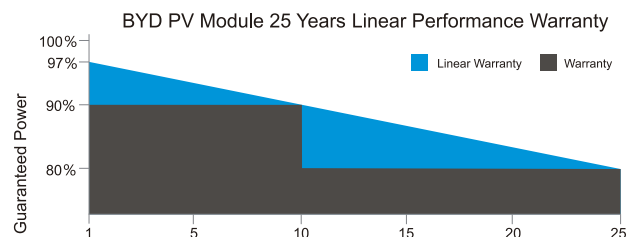
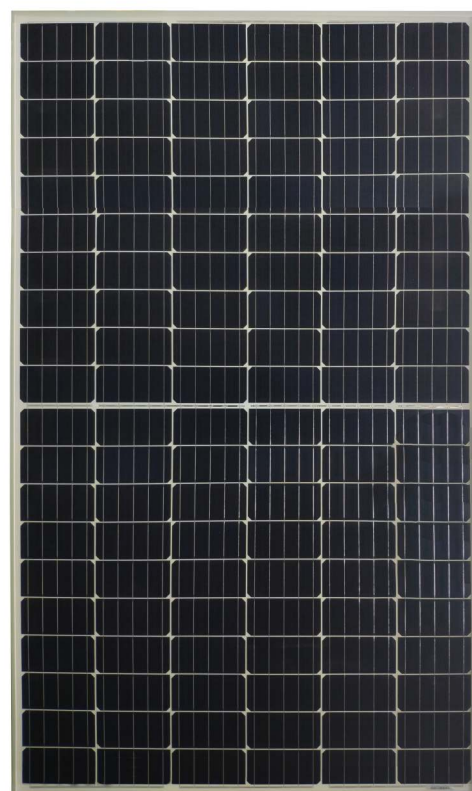


IEC61215-1(ed.1)
IEC61215-1-1(ed.1)
IEC61215-2(ed.1)
IEC61730-1(ed.2)
IEC61730-2(ed.2)

BYD

Monocrystalline Modules

BYD MHK-30-5BB 300W-330W



BYD MHK-30-5BB 300W-330W

Mechanical Properties

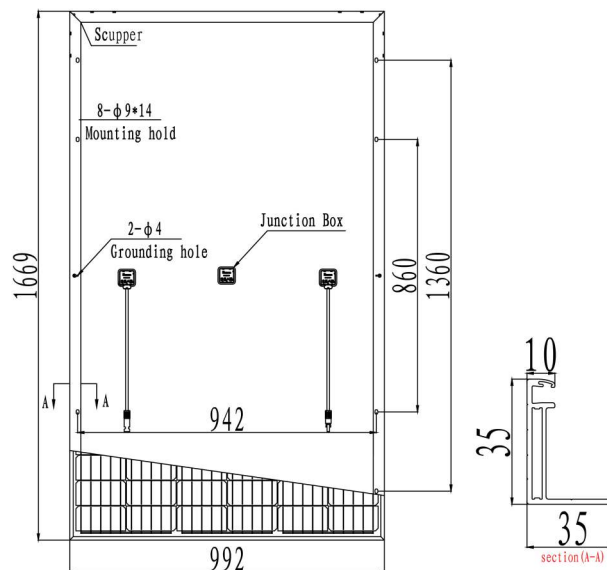
Cell Type	156.75mm*78.40mm
Number of Cells	120 (12 ×10) pcs
Dimension	1669mm*992mm*35mm
Weight	18.9Kg ±5%
Front/Glass	3.2mm tempered glass with AR Coating
Frame	Anodized aluminum alloy
Junction Box	IP67(3 Diodes)
Cable Type	4.0mm²*450mm
Connector	MC4 Compatible

Temperature Coefficient

TemP. Coeff. of Pmax (TK Pmax)	-0.328%/°C
TemP. Coeff. of Voc (TK Voc)	-0.254%/°C
TemP. Coeff. of Isc (TK Isc)	0.041%/°C

Packing Information

Packing Type	40' HQ
Piece/Pallet	30
Pallet/Container	26
Piece/Container	780



Electrical Properties

Module Type	BYD300MHK-30	BYD305MHK-30	BYD310MHK-30	BYD315MHK-30	BYD320MHK-30	BYD325MHK-30	BYD330MHK-30
Peak Power(Pmax)	300Wp	305Wp	310Wp	315Wp	320Wp	325Wp	330Wp
Open Circuit Voltage (Voc) (V)	40.18 V	40.43 V	40.70 V	40.94 V	41.20 V	41.45 V	41.71 V
Short Circuit Current (Isc) (A)	9.58 A	9.67 A	9.77 A	9.87 A	9.98 A	10.07 A	10.17 A
MPP Voltage (Vmp)(V)	32.91 V	33.10 V	33.30 V	33.50 V	33.71 V	33.90 V	34.09 V
MPP Current (Imp) (A)	9.12 A	9.22 A	9.31 A	9.41 A	9.51 A	9.61 A	9.71 A
Module Efficiency	18.12%	18.42%	18.72%	19.03%	19.33%	19.63%	19.93%
Operating Temperature (°C)	-40°C~+85°C						
Maximum System Voltage (V)	1500 (VDC)						
Maximun Series Fuse Rating (A)	15A						
Fire safety	Class C						
Power tolerance	0-5W						

* Under Standard Test Conditions (STC) of irradiance of 1000 W/m², spectrum AM 1.5 and cell temperature of 25°C.

NOCT

Peak Power(Pmax)	222Wp	226Wp	229Wp	233Wp	237Wp	240Wp	244Wp
Open Circuit Voltage(Voc) (V)	37.20 V	37.40 V	37.60 V	37.90 V	38.10 V	38.34 V	38.58 V
Short Circuit Current (Isc) (A)	7.75 A	7.83 A	7.90 A	7.98 A	8.07 A	8.14 A	8.22 A
MPP Voltage (Vmp)(V)	30.60 V	30.80 V	31.00 V	31.20 V	31.40 V	31.60 V	31.80 V
MPP Current (Imp) (A)	7.24 A	7.32 A	7.39 A	7.47 A	7.55 A	7.62 A	7.70 A

*NOCT: 45°C±2°C

BYD COMPANY LIMITED.

ADD: Yan An Road, Kuichong, Longgang, 518119 Shenzhen, PEOPLE'S REPUBLIC OF CHINA
Version No.: ENMHK-20191211 Reference before March 28 2020 only due to product development